

KÄRCHER

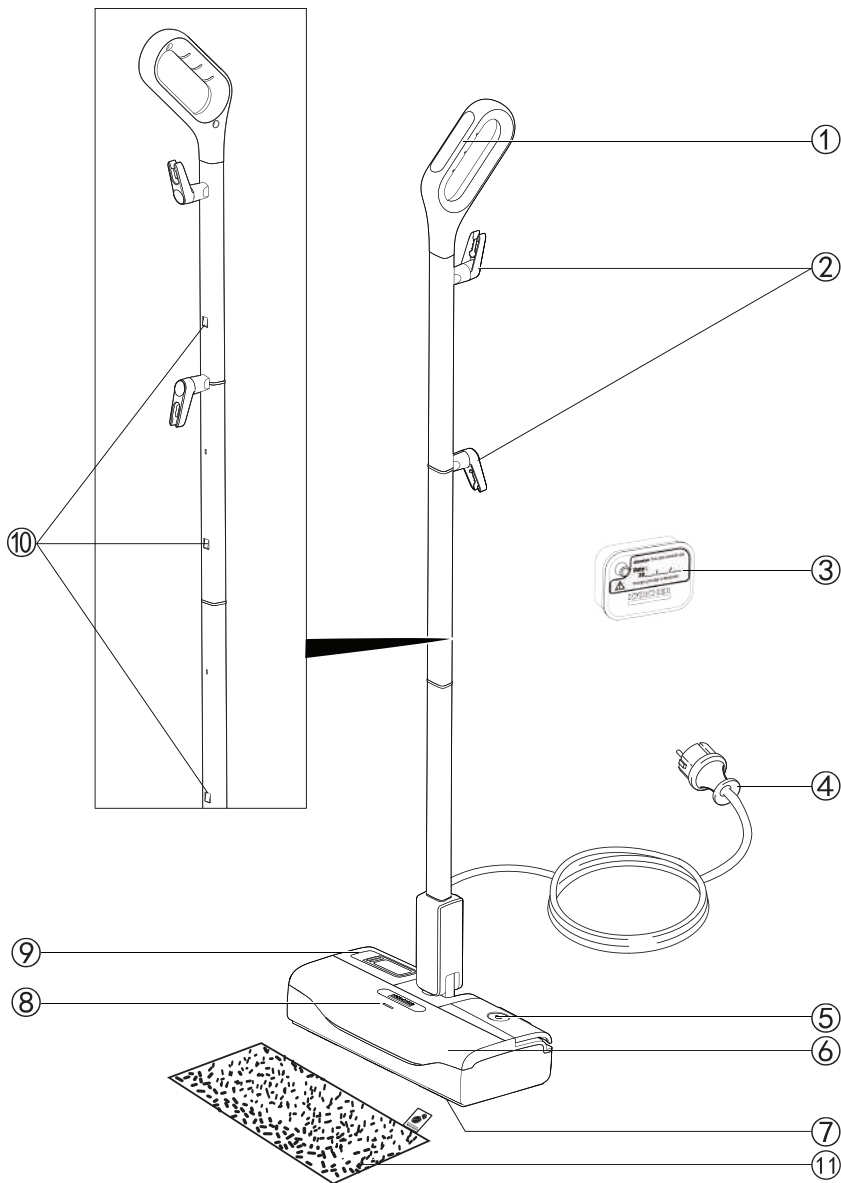
SC 1 Upright
KST 1 Upright

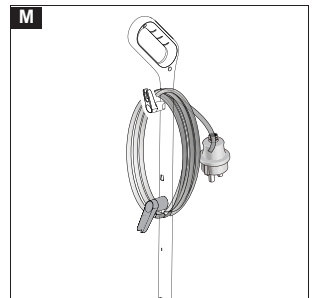
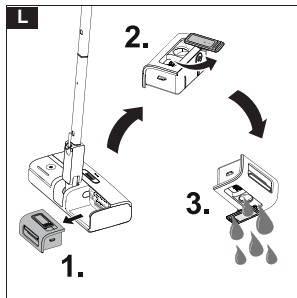
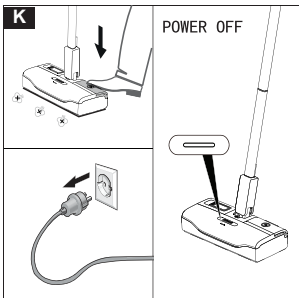
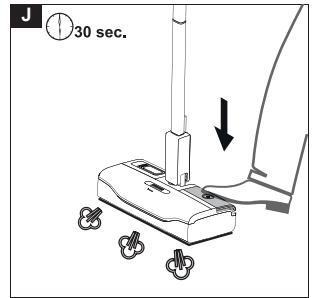
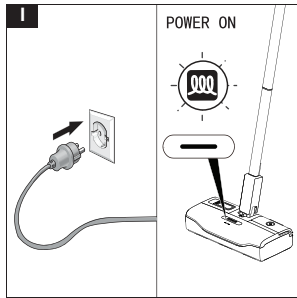
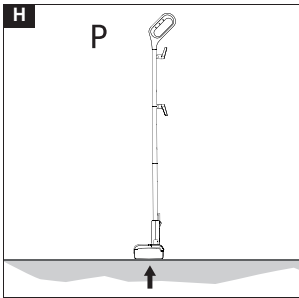
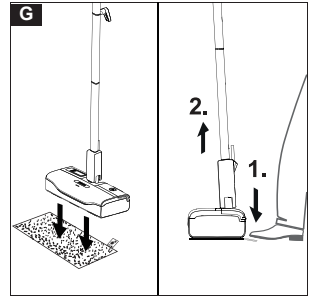
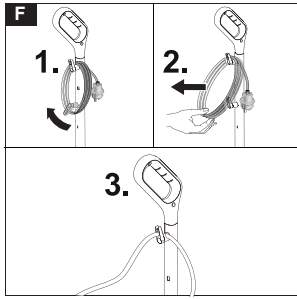
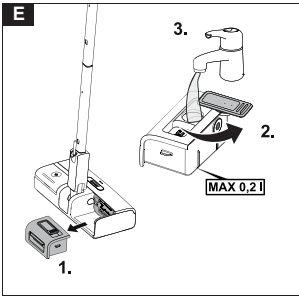
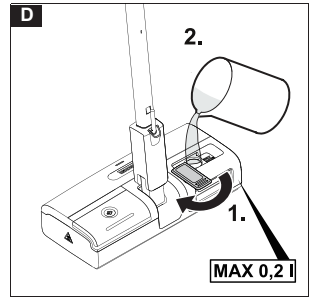
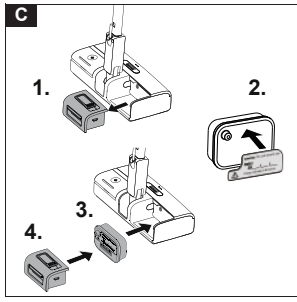
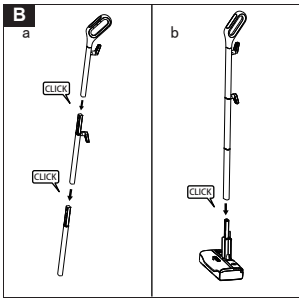


**Register
your product**
www.kaercher.com/welcome



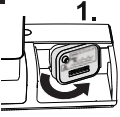
97744660 (10/23)





N

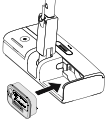
1.



2.



3.



Contents

Safety instructions	6
Intended use	8
Environmental protection	8
Accessories and spare parts	8
Scope of delivery	8
Safety devices	8
Description of the device	8
Installation	8
Initial Start-Up	9
Operation	9
Important application instructions	10
How to use the Accessories	10
Care and service	10
Troubleshooting guide	11
Warranty	11
Technical data	11

Safety instructions



Read this safety chapter and these original instructions before using the device for the first time. Act in accordance with

them. Keep the original instructions for future reference or for future owners.

- In addition to the notes in the operating instructions, you also need to take into consideration the general safety regulations and accident prevention guidelines applicable by law.
- Warnings and information notices attached to the device provide important information for hazard-free operation.

Hazard levels

⚠ DANGER

- Indication of an imminent threat of danger that will lead to severe injuries or even death.

⚠ WARNING

- Indication of a potentially dangerous situation that may lead to severe injuries or even death.

⚠ CAUTION

- Indication of a potentially dangerous situation that may lead to minor injuries.

ATTENTION

- Indication of a potentially dangerous situation that may lead to damage to property.

General safety instructions

⚠ DANGER • Risk of asphyxiation. Keep packaging film out of the reach of children.

⚠ WARNING • Only use the device for its proper use. Take into account the local conditions and beware of third parties, in particular children, when working with the device. • Only people who have been instructed on how to use the device, or have proven their ability to operate it, and have been explicitly instructed to use it, must use the device. • Persons with reduced physical, sensory or mental capabilities and persons lacking experience and knowledge may only use the appliance if they are properly supervised, have been instructed on use of the appliance safely by a person responsible for their safety, and understand the resultant hazards involved. • Children must not operate the device. • Children must be supervised to prevent them from playing

with the appliance. • Keep the device out of the reach of children when it is connected to the mains or when it is cooling down.

⚠ CAUTION • Do not use the device if it has been dropped beforehand, is visibly damaged or if it is leaking. • Safety devices are provided for your own protection. Never modify or bypass safety devices.

Risk of electric shock

⚠ DANGER • Never touch the mains plug and socket with wet hands. • Only connect the device to alternating current. The voltage indicated on the type plate must match the voltage of the power source. • Do not direct the steam jet directly onto equipment containing electrical components, e.g. the interior space of ovens. • Do not fill the devices with removable water reservoir directly via the water connection while they are connected to the mains power. Use a receptacle for filling. • Do not use the d in swimming pools which contain water. • The mains plug and extension cable connection must not be in water. • Do not clean over floor sockets.

⚠ WARNING • Only connect the device to an electrical connection which has been set up by a qualified electrician as per IEC 60364-1. • Only operate the device in wet rooms, e.g. bathroom, connected to sockets with upstream residual current device. • Check that the mains connection cable with mains plug is undamaged each time before using the device. To avoid any possible danger, a damaged mains connection cable must be immediately replaced by the manufacturer, or the authorised customer service department or a qualified electrician. • Do not damage the power supply and extension cable by running over it, crushing or yanking it or similar. Protect the power supply cable from heat, oil and sharp edges. • Unsuitable electrical extension cables can be dangerous. Only use electrical extension cables with a splash guard and a diameter of at least 3x1 mm². • Only replace couplings on the power supply or extension cable with those with the same splash guard and the same mechanical strength. • Clean tiled walls with sockets carefully. • Disconnect the device from the mains during longer operating breaks, after use or before performing any maintenance work. • Only carry out servicing work when the mains plug is pulled and the steam cleaner has cooled down.

Operation

⚠ DANGER • Operation in explosive atmospheres is prohibited. • When using the device in hazard zones (e.g. service stations), adhere to the respective safety regulations.

⚠ WARNING • Risk of scalding. Never touch the steam jet with your hand from a close distance, and do not direct it at people or animals. • Danger of scalding from high water output if you tilt the device more than 30° to the side during use. Only affects SC 1 devices • Risk of scalding on the hot steam boiler. Allow the steam boiler to cool down before filling it with water. Does not apply to SC 1 Upright / KST 1 Upright / SC 2 Upright / KST 2 Upright / SC 3 / SC 3 Upright devices • Risk of scalding. Let the appliance and accessory parts, particularly the floor cleaning cloth and the hand cover cool down before touching them. • Risk of scalding. Do not use the appliance for cleaning pressure tanks as this poses a bursting and explosion hazard. • Risk of scalding from the floor nozzle.

Ensure that no part of the body gets under the floor nozzle. Never operated the floor nozzle without wearing shoes. ● Risk of scalding. Only operate the appliance once it is fully assembled and functional. ● Risk of scalding. Let the appliance cool down fully before putting it away. **ATTENTION** ● Do not fill with any cleaning agents or other supplements. ● Do not use vinegar or similar agents. **WARNING** ● Never disconnect accessories from the device while steam is being expelled. ● Hot water may drip out when disconnecting accessory parts. Allow the device to cool down first. ● Never open the maintenance / safety lock during operation. Allow the device to cool down first. ● Do not clamp the steam lever / steam key during operation. ● Replace a damaged steam hose immediately with a steam hose as recommended by the manufacturer. ● Do not steam any objects which contain harmful substances (e.g. asbestos).

⚠ CAUTION ● Only operate or store the device in accordance with the description or figure. ● Check the device and the accessories, in particular the power supply cable, safety lock and steam hose, to make sure it is in proper safe and reliable condition before operation each time. Do not use the device if it is damaged. Replace damaged components immediately. ● Only switch on the device when water is present in the steam boiler. The device may otherwise overheat, see the Troubleshooting chapter of the operating instructions. ● Accidents or damage due to the device falling over. Before all actions with or on the device, you must make sure that it is stable. ● Do not carry the device when performing cleaning work.

ATTENTION ● Do not operate the device at temperatures below 0 °C. ● Never leave the device unsupervised while it is connected to the mains. ● Do not use the appliance as a humidifier or heater. ● Ensure the room is well ventilated when working with the appliance and afterwards. ● Protect the device from rain. Do not store the device outdoors. ● Device damage. Never pour solvents, liquids containing solvents or undiluted acids (e.g. detergents, petrol, paint thinner and acetone) into the boiler/water reservoir. ● Unsuitable water can block the nozzles or damage the water level indicator. Do not fill with condensate water from a tumble dryer, collected rainwater, detergents or additives (e.g. scents). Fill the water reservoir with a maximum of 0.2 l / 0.4 l / 0.5 l / 1 l of tap water. Only applies to SC 1 Upright / KST 1 Upright / SC 2 Upright / KST 2 Upright / SC 3 Upright / SC 3 devices ● Unsuitable water can block the nozzles or damage the water level indicator. Do not fill with pure distilled water, condensation from a dryer, collected rain water, detergents or additives (e.g. fragrances), use a maximum of 50% distilled water mixed with tap water.

- Remove the water reservoir for filling
 - a Pull the water reservoir vertically in an upward direction
 - b Fill the water reservoir vertically with tap water or a mixture of tap water and a maximum of 50% distilled water up to the "MAX" marking.
 - c Insert the water reservoir and press down until it clicks into place.
- Fill the water reservoir directly at the device
 - a Fill tap water or a mixture of tap water and a maximum of 50% distilled water up to the "MAX" marking in the filling hole for the water reservoir.

Applies only to SC 4 and SC 5 devices

Note ● Refilling water

- 1 Switch off the device.
- 2 Allow the device to cool down.
- 3 Unscrew the safety lock.
- 4 Drain the water completely out of the steam boiler.
- 5 Fill a maximum of 200 ml distilled water or tap water into the steam boiler.
- 6 Insert the safety lock.

Applies only to SC 1 devices ● Refilling water

- 1 Switch off the device.
- 2 Allow the device to cool down.
- 3 Unscrew the safety lock.
- 4 Drain the water completely out of the steam boiler.
- 5 Fill a maximum of 1 l distilled water or tap water into the steam boiler.
- 6 Insert the safety lock.

Applies only to SC 2 / KST 2 devices

For upright machines

⚠ WARNING ● Risk of scalding. Only operate the device on even, horizontal surfaces. Do not lay the device on its side during operation. Do not use the device above head height or horizontally e.g. to clean walls, work surfaces or windows. Only applies to SC 1 Upright / KST 1 Upright / SC 2 Upright / KST 2 Upright / SC 3 Upright

⚠ CAUTION ● In order to guarantee stability, place the device on a firm, flat surface.

Care and service

⚠ CAUTION ● Have repair work carried out by the authorised customer service only.

Descaling the steam boiler

Does not apply to SC 1 Upright / KST 1 Upright / SC 2 Upright / KST 2 Upright / SC 3 / SC 3 Upright devices

⚠ CAUTION ● Never screw the safety lock onto the device while descaling. ● Do not use the steam cleaner while there is descaler in the boiler.

ATTENTION ● The descaler may corrode sensitive surfaces. Work carefully when filling and emptying the steam cleaner with descaler.

ATTENTION ● Do not use vinegar or similar agents.

Steam cleaner accessories

(Depending on equipment)

Iron

⚠ WARNING ● Risk of scalding. Do not direct the steam jet at people or animals. ● Risk of burns on hot steam pressure iron and hot steam jet. Alert other people to the hazard. ● Do not touch any electrical cables or combustible objects with the hot steam pressure iron. ● Have the damaged mains cable replaced immediately by an authorized customer service/qualified electrician. ● Children over the age of 8 and persons with reduced physical, sensory or mental capabilities, or those with a lack of experience and knowledge, are only allowed to use the appliance if they are properly supervised, have been instructed with respect to using the appliance safely by a person responsible for their safety, and understand the resultant dangers involved. ● Children must not play with the appliance. ● Children may only perform cleaning work and user maintenance under supervision.

⚠ CAUTION ● Do not use the steam pressure iron if it has been dropped, has visible damage or is leaking. ● Do not leave the steam pressure iron unat-

tended while it is connected to the mains. ● Before the water reservoir (of the steam cleaner) is filled with water, the mains plug must be pulled out of the socket. ● You must only operate or set down the steam pressure iron on a stable surface. ● When placing the steam pressure iron on its stand, make sure that the stand is stable. ● Repair work on the device may only be carried out by authorized customer service.

Steam turbo brush

⚠ CAUTION

- Longer periods of use of the steam turbo brush may lead to poor blood circulation in the hands due to vibration. In case of symptoms, e.g. tingling in the fingers, cold fingers, take a break. A general period of use cannot be set, because this depends on several influencing factors:
- Personal tendency to suffer from poor circulation (frequently cold fingers, tingling sensation in the fingers).
- Holding the device too tightly hindering blood circulation.
- Continuous operation is more harmful than operation interrupted by work breaks.
You should consult a doctor if using the steam turbo brush regularly and for lengthy periods of time, and in the event of repeated occurrences of symptoms such as tingling in the fingers or cold fingers.

Intended use

Use the device only in private households for cleaning level hard floors (e.g. stone floors, tiles, PVC floors, as well as sealed wooden floors such as parquet and laminate) that can withstand the high temperature, pressure and moisture of the device. Do not clean any water-sensitive coverings such as untreated cork floors (moisture can penetrate and damage the floor).
Cleaning agents are not required.

Environmental protection



The packing materials can be recycled. Please dispose of packaging in accordance with the environmental regulations.



Electrical and electronic devices contain valuable, recyclable materials and often components such as batteries, rechargeable batteries or oil, which - if handled or disposed of incorrectly - can pose a potential danger to human health and the environment. However, these components are required for the correct operation of the device. Devices marked by this symbol are not allowed to be disposed of together with the household rubbish.

Notes on the content materials (REACH)

Current information on content materials can be found at: www.kaercher.de/REACH

Accessories and spare parts

Only use original accessories and original spare parts. They ensure that the appliance will run fault-free and safely.

Information on accessories and spare parts can be found at www.kaercher.com.

Scope of delivery

The scope of delivery for the appliance is shown on the packaging. Check the contents for completeness when unpacking. If any accessories are missing or in the

event of any shipping damage, please notify your dealer.

Safety devices

⚠ CAUTION

Missing or modified safety devices

Safety devices are provided for your own protection. Never modify or bypass safety devices.

Symbols on the device

(according to type of appliance)

	Risk of burns, surface of appliance becomes hot during operation
	Risk of scalding from steam
	Read operating instructions

Safety valve

In the case of excessively high pressure in the event of a fault, a safety valve relieves the pressure into the atmosphere.

Fuse

The fuse prevents the device from overheating. If the device overheats, the fuse disconnects the device from the power supply.

Before re-commissioning the device, contact the responsible KÄRCHER Customer Service.

Description of the device

The maximum amount of equipment is described in these operating instructions. Depending on the model used, there are differences in the scope of delivery (see packaging).

For the illustrations, see graphics page.
Illustration A

- ① Handle
- ② Cable hook with cable fastener
- ③ Decalcification cartridge
- ④ Mains connection with mains plug
- ⑤ Steam ON/OFF switch
- ⑥ Floor head
- ⑦ Hook and loop fastener
- ⑧ Power-on indicator
- ⑨ Water reservoir
- ⑩ Unlocking button for device handle
- ⑪ Floor cloth

Installation

Installing the device handle

1. Fit the three parts of the device handle into each other in order until it audibly latches into place.
2. Hold the basic device firmly.
3. Fit the device handle all the way to the end stop into the basic device until it audibly latches into place.
4. The device handle must sit tightly in the device.

Illustration B

Installing the floor cleaning cloth

1. Attach the floor cleaning cloth to the floor head.
 - a Place the floor cleaning cloth with the hook and loop strips pointing upwards on the floor.
 - b Place the floor head onto the floor cleaning cloth, applying slight pressure.

Illustration G

The floor cleaning cloth will stick to the floor head of its own accord due to the hook and loop fastener.

Initial Start-Up

ATTENTION

Device damage due to calcification

Always work with a decalcification cartridge.

1. Press the latching hook of the water reservoir upwards and pull out the water reservoir.

Illustration C

2. Unpack the decalcification cartridge.
3. Write down the first use date of the decalcification cartridge on the warning label.

Note

Please label with a waterproof pen.

4. Insert the decalcification cartridge into the device and press it firmly into place.

Note

Please replace the decalcification cartridge in 4 months or a flow of approx. 15 l of water.

Operation

Filling water

The water reservoir can be filled at any time.

ATTENTION

Material damage through open reservoir cover or incorrectly seated or loose water reservoir

Liquid can escape and damage the floor covering if the reservoir cover is not correctly closed or the water reservoir is not correctly inserted into the device.

Take care to ensure that the reservoir cover is securely closed and the water reservoir is seated tightly in the device when the water reservoir is full.

ATTENTION

Damage to the device

Unsuitable water can block the nozzles.

Do not use condensation from the clothes dryer for filling.

Do not use collected rain water for filling.

Do not use cleaning agents or other additives (e.g. scents) for filling.

Filling the water reservoir directly on the device

1. Hold the device firmly.
2. Open the reservoir cover, and turn it to the side.
3. Fill with max 0.2 l tap water directly at the device.

Illustration D

4. Close the reservoir cover.

Removing the water reservoir for filling

1. Press the latching hook of the water reservoir upwards and pull out the water reservoir.
2. Open the reservoir cover, and turn it to the side.
3. Fill with max 0.2 l tap water.

Illustration E

4. Close the reservoir cover.
5. Insert the water reservoir and press it firmly into place.

Unwinding the power cable

⚠ WARNING

Risk of electric shock

If the power cable is not completely unwound, the danger exists of you straining and damaging the power cable by overestimating the range of the cable.

Always completely unwind the power cable.

Note

The lower cable holder can be rotated by 360° for removing the cable. The upper cable hook cannot be rotated.

1. Turn the lower cable holder upwards.
2. Remove the power cable completely from the cable hook.
3. Fasten the cable in the fastener of the upper hook to prevent it from being run over during cleaning work.

Illustration F

Switching on the device

Installation information

When steaming for the first time after removing and reinserting the decalcification cartridge, the steam jet maybe weak or irregular, and individual drops of water may be expelled. The device requires a short running-in period in which the decalcification cartridge fills with water. The steam volume that is expelled increases constantly until the maximum steam volume has been reached after approx. 20 seconds.

1. Place the device on a firm surface.

Illustration H

2. Plug the mains plug into a mains socket.

3. The power-on indicator light lights up constantly green.

Illustration I

After waiting for approx. 30 seconds, the device is ready for use.

4. Press the steam on/off switch by foot. The steam comes out.

Illustration J

Refilling water

Note

If there is a water shortage, the pump sounds loud and there's no visible steam.

When the water is refilled, the decalcification cartridge remains fixed in the device.

ATTENTION

The device is equipped with dry-run protection for the pump. If the pump runs dry for a longer period, e.g. because the decalcification cartridge and the water reservoir are not correctly inserted, the pump is overheating and switches off. To be able to operate the device again, the device has to be switched off and wait the pump to be cool down for approx. 10 minutes. In the process, you must make sure that the cartridge and the water reservoir have been inserted correctly and there is enough water in the water reservoir.

- Press the steam on/off switch by foot. The steam stops in few seconds.
- Open the reservoir cover, and fill the water reservoir with max. 0.2 l tap water directly at the device.

Illustration D

or

- Remove the water reservoir, open the reservoir cover, and fill with max. 0.2 l tap water, see chapter *Fill-ing water*.

Illustration E

Interrupting operation

ATTENTION

Material damage due to condensate/moisture

The floor covering can be damaged by moisture remaining on the floor cleaning cloth or device after cleaning. Remove the floor cleaning cloth and dry the device after finishing the cleaning work. Do not place or store the device on heat-sensitive surfaces.

ATTENTION

Damage to the material and the device

The floor covering and the device can be damaged by consistently steam while the device stands still. Switch off the device every time you leave. Press the steam on/off switch by foot. The steam stops in few seconds.

In order to save energy, we recommend that you switch off the device for breaks in operation of longer than 20 minutes.

1. Press the steam on/off switch by foot. The steam stops in few seconds.
2. Pull the mains plug out of the socket.

Illustration K

3. Park the device.

Illustration H

Switching off the device

1. Press the steam on/off switch by foot. The steam stops in few seconds.
2. Pull the mains plug out of the socket.

Illustration K

3. To drain the water reservoir, see chapter *Draining the water reservoir*.

Illustration L

Storing the device

1. To remove the floor cleaning cloth, see chapter *How to use the Accessories*.

Illustration G

2. Remove the moisture from the device.
3. Wind the power cable around the lower and upper cable hooks.

Illustration M

4. Store the device in a dry location that is protected from frost.

Important application instructions

Cleaning the floor areas

We recommend sweeping the floor or vacuum cleaning it before using the appliance. In this way the floor will be cleared of dirt and loose particles before the wet cleaning.

The device is suitable for cleaning washable floor coverings, e.g. stone floors, tiles and PVC floors, as well as sealed wooden floors such as parquet and laminate.

ATTENTION

Damage due to steam effect

Heat and the effects of steam can lead to damage. Check the heat resistance and steam effect on an inconspicuous area using a minimal volume of steam prior to use.

Do not remain the steam in the same position on the sealed wooden floors for too long.

Note

Detergent residues or care emulsions on the surface to be cleaned can cause streaks during steam cleaning, but these disappear after repeated use.

⚠ CAUTION

Beware of burns to your feet

The floor head/floor cleaning cloth heats up during steaming.

Hot water may drip out when pulling off the floor cloth. Only operate or remove the floor head/floor cleaning cloth with suitable footwear.

For fastening the floor cleaning cloth to the floor head, please refer to chapter *How to use the Accessories*

How to use the Accessories

Floor cloth

The floor cloth is suitable for cleaning stone floors, tiles and PVC floors, and also sealed wooden floors such as parquet and laminate.

Removing the floor cleaning cloth

Note

Please make sure the device is switched off before removing the floor cleaning cloth.

1. Place one foot on the bottom corner of the floor cleaning cloth and lift the floor head up.

Illustration G

Note

Initially, the floor cleaning cloth's hook and loop fastener strip is very strong and cannot be removed from the floor head easily. After the floor cleaning cloth has been used several times and washed, it is easier to remove from the floor head and it has reached the optimum adhesion.

Care and service

Draining the water reservoir

ATTENTION

Device damage due to water putrefaction

If the device is not put into operation for more than 2 months, the water in the reservoir may putrefy.

Drain the water reservoir before breaks in operation.

1. Remove the water reservoir and open the reservoir cover.
2. Drain the water reservoir.

Illustration L

Replacing the decalcification cartridge

ATTENTION

Device damage and shortened service life

Please replace the decalcification cartridge in 4 months or a flow of approx. 15 l of water. If the decalcification cartridge is not replaced in time, there is a risk of device damage and the service life of the device may be shortened.

Note

Write down the first use date of the decalcification cartridge on the warning label. Please label with a waterproof pen.

Note

The anti-calcification effect of the decalcification cartridge is activated as soon as the reservoir is filled with water, and the device is put into operation. Lime in the water is absorbed by the granulate in the decalcification cartridge. Additional descaling is not required.

Note

The granulate in the decalcification cartridge may change colour after it comes into contact with water. This depends on the mineral content in the water. This discolouration is harmless and does not have a negative effect on the device, the cleaning work or the functionality of the decalcification cartridge.

Inserting the decalcification cartridge

ATTENTION

Device damage

There is a risk of damage to the device if the used decalcification cartridge is re-used.
Work carefully in order to prevent mixing up the cartridges.

Installation information

When steaming for the first time after removing and re-inserting the decalcification cartridge, the steam jet may be weak or irregular, and individual drops of water may be expelled. The device requires a short running-in period in which the decalcification cartridge fills with water. The steam volume that is expelled increases constantly until the maximum steam volume has been reached after approx. 20 seconds.

Note

Remove the water reservoir before removing and installing the decalcification cartridge.

1. Press the steam on/off switch by foot. The steam stops in few seconds.
2. Pull the mains plug out of the socket.

Illustration K

3. Remove the water reservoir and open the reservoir cover.
4. Remove the decalcification cartridge.
5. Write down the first use date of the new decalcification cartridge on the warning label.

Note

Please label with a waterproof pen.

6. Insert the new decalcification cartridge and press it firmly into place.

Illustration N

7. Insert the mains plug into a socket.
8. Press the steam on/off switch and wait for approx. 20 seconds to vent the decalcification cartridge.

Care of accessories

(Accessories - depending on scope of delivery)

Note

The cloths are not suitable for dryer.

Note

Observe the instructions on the washing tag when washing the cloths. Do not use any liquid softeners as this will affect the ability of the cloths to pick up dirt.

1. Wash the floor cleaning cloths in a washing machine at a max. temperature of 60 °C.

Troubleshooting guide

Malfunctions often have simple causes that you can remedy yourself using the following overview. When in doubt, or in the case of malfunctions not mentioned here, please contact your authorised Customer Service.

⚠ WARNING

Risk of electric shock and burns

Trying to eliminate faults while the appliance is connected to the mains or has not yet cooled down is always dangerous.

Remove the mains plug.

Allow the appliance to cool down.

The pump sounds loud and there is no steam.

No water in the water reservoir.

- Fill the water in the water reservoir.

No steam / little steam although there is sufficient water in the reservoir

The decalcification cartridge has not been inserted or has been inserted incorrectly.

- Fit the decalcification cartridge and/or check that the decalcification cartridge sits tightly in the device and press in again if necessary.

A new decalcification cartridge has been fitted.

- Press the steam on/off switch and make sure the pump is working by the pump sound.
The full steam output is reached after approximately 20 seconds.

The water reservoir has not been installed in place.

- Check that the water reservoir is installed in place and press in again if necessary.

Warranty

The warranty conditions issued by our sales company responsible apply in all countries. We shall remedy possible malfunctions on your device within the warranty period free of cost, provided that a material or manufacturing defect is the cause. In a warranty case, please contact your dealer (with the purchase receipt) or the next authorised customer service site.
(See overleaf for the address)

Technical data

		SC 1 Upright KST 1 Upright
Electrical connection		
Voltage	V	220-240
Phase	~	1
Frequency	Hz	50-60
Degree of protection		IPX4
Protection class		I
Device performance data		
Heating capacity	W	1300
Heating-up time	Seconds	30
Filling quantity		
Water reservoir	l	0.2
Dimensions and weights		
Weight (without accessories)	kg	2.0
Length	mm	314
Width	mm	147
Height	mm	1197

Subject to technical modifications.



THANK YOU!
MERCI! DANKE! ¡GRACIAS!



Registrieren Sie Ihr Produkt und profitieren Sie von vielen Vorteilen.

Register your product and benefit from many advantages.

Enregistrez votre produit et bénéficiez de nombreux avantages.

Registre su producto y aproveche de muchas ventajas.

www.kaercher.com/welcome



Bewerten Sie Ihr Produkt und sagen Sie uns Ihre Meinung.

Rate your product and tell us your opinion.

Évaluer votre produit et dites-nous votre opinion.

Reseñe su producto y díganos su opinión.



www.kaercher.com/dealersearch

Alfred Kärcher SE & Co. KG

Alfred-Kärcher-Str. 28-40

71364 Winnenden (Germany)

